



Introducing:

# MEGAVERSE CITY

The OMNITAINMENT® Capital

Exlus Bennett,  
Concept Creator/Owner and  
Chief Executive Officer



Introducing:

**MEGAVERSE CITY,**

The Pulse of OMNITAINMENT®

Vickee' Armstrong,  
Chief Vision Officer & External Affairs Liaison

Cornelius Lambert  
Charles Blackmon  
C2 Construction General Contractor  
& Project Management



OMNITAINMENT® THEME  
PARKS, FANTASCAPES®  
GOLF COURSE, HEALTH &  
RESORTSPA, SPORTS  
STADIUM

Multi-use, World Cup, Equestrian, Concerts



CLASSIC & INCLUSIVE  
REINVENTED BRAND  
COMICS

MV PROPRIETARY CHARACTERS  
AND OTHER ORIGINAL CLASSICS



MV WORLD EATS TABLE

RESTAURANTS, FOOD PLAZAS  
FOOD TRUCK PARKS, STREET FOOD  
BEER GARDEN



HOTELS,  
RESORTS,  
RESIDENTIAL  
PLANNED  
COMMUNITIES



FILM PRODUCTION STUDIO  
ART PRODUCTION AND RADIO  
STUDIO



MUSEUMS,  
COMMUNITY  
COLLEGES,  
TECH  
SCHOOLS



# “Come and See or Come and Be!”



MANY FORMS OF  
ENTERTAINMENT EXISTS...



...THE CONCEPT  
WAS MERGED AND  
LAUNCHED!



MEGAVERSE CITY  
WAS BORN!  
EXTREME EVOLUTION  
OF ENTERTAINMENT!



COME AND SEE,  
COME AND BE!

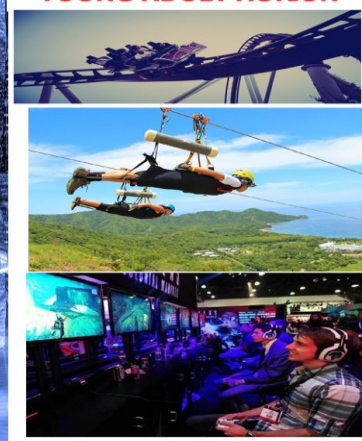
# MEGAVERSE CITY

THE CAPITAL OF OMNITAINMENT!  
MORE THAN A THEME PARK COULD EVER BE!

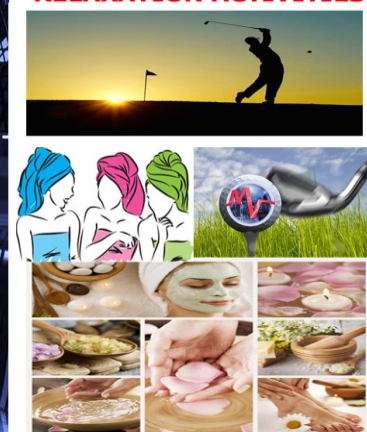
## CHILDREN ACTIVITIES



## YOUNG ADULT ACTION



## RELAXATION ACTIVITIES







**Megaverse City, LLC** has taken ideas and concepts to a new level of theme park culmination. So much so that “theme park” was no longer adequate to define or describe the project or concept. Megaverse City is by definition an Omnitainment® World. (slide #2) The next generation of athletic, cerebral and innovation thrill seekers will find everything imaginable in Megaverse City including comic/video game characters and live fields, where enthusiasts/cosplayers can become their own character or of their heroes. *Megaverse City's* theme is based on comic book heroes and literary characters. The “world” is made up of a ‘City’ scape where the Wrapacoasters® are the subways, building roofs are landing ports for flying people/vehicles. Characters have secret identities, ordinary folks become extraordinary, capes are welcomed, historical and folk figures are made real, and the fantasy adventure of a lifetime occurs.





**Megaverse City** is a Limited Liability Corporation governed by a board of educators, designers, scientists, artists and bankers and lawyers all who share in the dream of the future of amusement parks and the evolving need of the human spirit. The governing board will oversee, conduct, and supervise business management. It will also be responsible for major acquisitions, purchases and “NextGen” technology keeping Megaverse City® ever evolving!

## **THE ECONOMIC IMPACT AND OTHER STATISTICS**

**Environmental Sustainability!**  
**Solar use!**  
**Collaboration with local industries!**  
**Seeks suppliers with sustainable product!**  
**Year round employment!**  
**500+ employment opportunities!**  
**401k, IRA and Pension offered!**  
**Healthcare, vision, dental plan!**  
**Offsite community interaction!**  
**Adult relaxation/health center!**  
**Financial impact to local economy!**

# MEGAVERSE CITY

- MEGAVERSE CITY, LLC  
combined income  
\$1,350,100,000.00

Blue sky Sponsorships,  
Branding, E-Commerce  
\$6,000,000

- HOTELS, RESORTS,  
PLANNED COMMUNITIES  
\$25,000,000

- WORLD EATS TABLE  
• \$8,000,000



FILM PRODUCTION STUDIOS IN  
CONJUNCTION WITH NC FILMS  
• \$75,000,000.00

- COMIC ADVENTURES, COSPLAY,  
• MERCHANDISE  
• \$8,000,000

MUSEUMS, COMMUNITY  
COLLEGES, Tech Schools  
\$2,000,000

## \$1,350,100,00

*NET BILLION WITH A "B"*



🔑 CONCEPT 01

SITE  
SELECTION?

📖 Fast Forward  
State  
Adaptation  
Phase I-III  
Time Lines

🕒 Funding  
Time Lines  
Due Diligence  
Contracts  
Legal Reviews  
Financing

🍃 INVESTORS  
STAKE HOLDERS  
STATE & MUNICIPAL

02

INFRASTRUCTURE 03  
WORKFORCE  
ZERO CARBON GREEN CLEAN  
CONCENTRIC MACRO AND  
MICRO ECONOMIC IMPACT ➡

04

🕒 Come

?

Be

30

see  
COME